

# NurtureControl

wearable breast pump



Instruction Manual

# Introduction

Welcome to the Eynshan family! As a mother or soon-to-be mother, you've embarked on one of life's most beautiful journeys, and we're honored to be a part of it.

## About Eynshan:

Eynshan is a leading brand, dedicated to crafting high-quality products that cater to the specific needs of mothers worldwide. With a focus on innovation, safety, and convenience, we strive to provide the best possible support for your breastfeeding journey.

## Understanding NurtureControl:

The Eynshan NurtureControl Wearable Breast Pump emerges as a flagship offering, embodying the pinnacle of our innovation. It is the culmination of exhaustive research and valuable consumer insights. Our dedication to providing an effortless, serene, and productive breastfeeding journey is deeply ingrained in every aspect of this product.

## Key Features:

- **Wearability:** Designed for discreet, hands-free use, allowing multitasking or relaxation during pumping.
- **Streamlined Aesthetics:** Contemporary, ergonomic design fits your body for superior comfort.
- **Customizable Pumping Modes:** Offers 3 modes and 9 intensities for tailored pumping experiences.
- **Standalone Stability:** Ingeniously structured for independent upright stability, reducing spill risks.
- **Remote-Controlled Convenience:** Adjust settings remotely with a handy remote, ideal for busy mothers.
- **Non-Intrusive Design:** Lacks LED display, ensuring a discreet, minimalist pumping experience.
- **Whisper-Quiet Operation:** Silent motor allows inconspicuous use without disturbing baby's sleep.
- **Gentle Yet Effective:** Mimics natural nursing, combining gentle skin care with efficient milk expression.
- **Safety in Purity:** BPA-free and closed system design ensures milk purity, preventing contamination.

## Purpose of This Manual:

This manual provides instructions, cleaning, and maintenance for your NurtureControl Breast Pump. Each section guides you through safe, comfortable use, enhancing device efficiency. It's comprehensive, ideal for beginners and experienced users.

**Read this manual thoroughly before using the pump to maximize NurtureControl's benefits. The Eynshan NurtureControl supports your nursing journey at home, work, or on the go.**

Thank you for trusting Eynshan. Happy pumping!

# Safety Precautions

## General Safety:

1. **Read the Manual:** Before using the Eynshan NurtureControl Wearable Breast Pump, thoroughly read and understand this manual. Keep it for future reference.
2. **Inspect Before Use:** Check the breast pump and its components for damage before each use. Don't use if any parts are damaged.
3. **Keep Away from Children:** This device has small parts. Ensure the pump and its components are out of children's reach.
4. **Device Handling:** Handle with clean hands, free from lotions or creams that could contaminate the milk.

## Operation Safety:

1. **Initial Use:** Sterilize all parts contacting the breast and milk before first use.
2. **Avoid Wet Connections:** Do not immerse the motor unit in any liquid. Wash detachable parts only.
3. **Right Position:** Correctly position the pump on your breast to prevent discomfort or injury.
4. **Comfortable Setting:** Begin with the lowest suction setting, then adjust to comfort.
5. **Limit Pumping Duration:** Avoid using continuously for more than 20 minutes to prevent nipple soreness or injury.

## Maintenance and Storage:

1. **Regular Cleaning:** Clean and sterilize removable parts after each use.
2. **Safe Storage:** Store in a clean, dry place when not in use.
3. **Battery Care:** The Eynshan NurtureControl has a built-in lithium battery. Charge regularly and avoid extreme temperatures. Inactivity affects battery life.

## Electrical Safety:

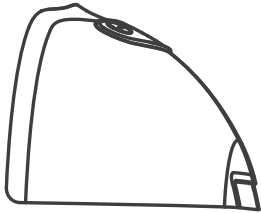
1. **Avoid Multi-plug Adapters:** Plug directly into an outlet, avoiding adapters or extension cords.
2. **Voltage Check:** Match the power source to the voltage on the adapter.
3. **Keep Dry:** Operate away from water or liquids to prevent electric shock.
4. **In Case of Discomfort:** Stop using the pump immediately if you experience discomfort, pain, or swelling, and consult a healthcare professional.

**For any issues or concerns, contact our customer support. Your safety and comfort are our top priorities.**

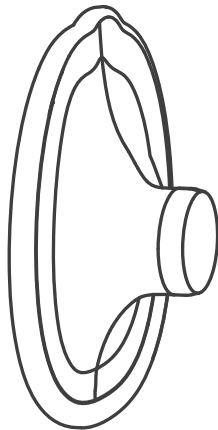
# Product Overview

## Components

1



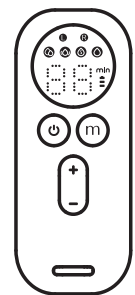
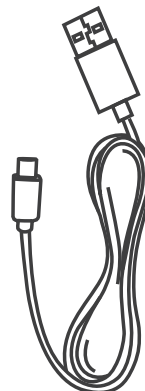
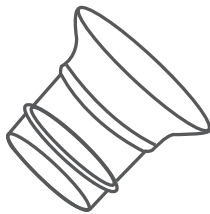
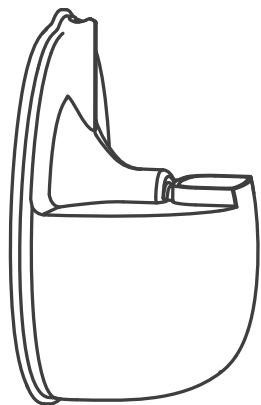
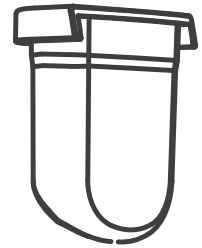
2



3



4



5

6

7

8

1 Main Pump Unit

2 Silicone Shield \*

3 Valve \*

4 Silicone Diaphragm

5 Milk Collection Container

6 Silicone Insert\*

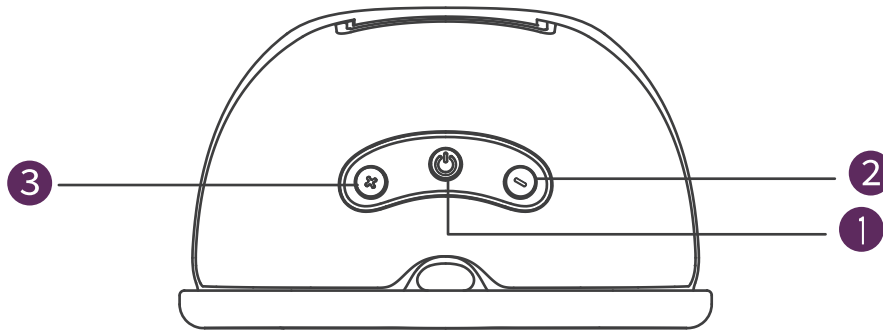
7 Charging Cable\*

8 Remote Control

Eynshan Nurture wearable breast pump now includes 24mm & 27mm silicone shields, two valves, a 150ml milk container, a 19mm silicone insert, and uses a Type-C charging cable.



# Nurture Display Guide



## 1 • Power On/Off Button

### • Mode Button:

1. Massage Mode (Blue Light): Mimics initial quick suckling to start milk flow.
2. Stimulation Mode (No Light): A combination of massage and expression with adjustable strength.
3. Expression Mode (Pink Light): Emulates deep suckling with nine adjustable settings.

### • Battery Indicators

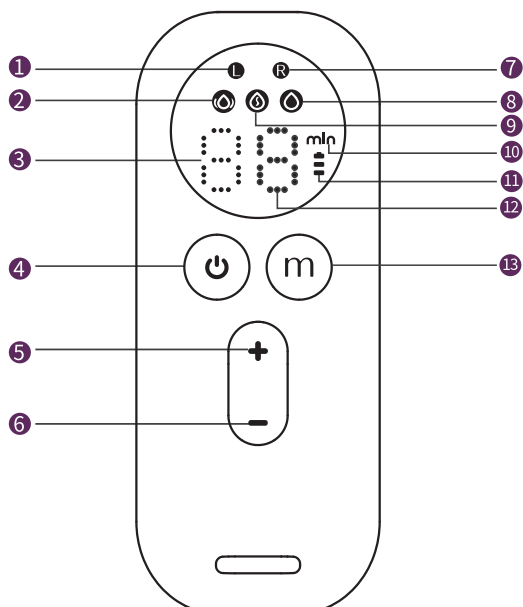
Sufficient Battery (Green Light)

Low Battery Alert (Red Light)

## 2 • Level Down Button

## 3 • Level Up Button

# Remote Control Display Guide



## 1 Left Side Pumping Control Guide

## 2 Massage Mode

## 3 Duration Timer

## 4 Power | Selection 'L' / 'R' Button

## 5 Level Up

## 6 Level Down

## 7 Right Side Pumping Control Guide

## 8 Expression Mode

## 9 Stimulation Mode

## 10 Minute Indicator

## 11 Battery Indicator

## 12 Level Display

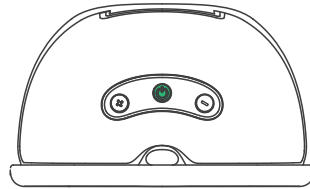
## 13 Mode Button

# Nurture's Battery Status Indicator

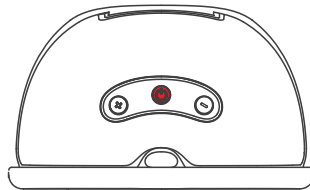
The Eynshan NurtureControl breast pump features a light-based battery status indicator to inform you about the remaining pump time.

## Battery Indicator Light:

The light on the pump displays the current battery status, helping you gauge the available pumping duration.



**Green Light Constant:** Signifies a well-charged battery with over 120 minutes of available pumping time.



**Red Light Flashing:** Indicates that the remaining pump time is less than 20 minutes. It's a signal to recharge the pump soon.

 The Eynshan NurtureControl temporarily stops pumping during its charging phase.

# Nurture's Battery Status Indicator

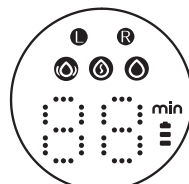
The Eynshan Remote Control R5 is equipped with a battery status indicator to give you insights into the remaining control time. Here's how to interpret the indicator:

Sure, here's a simplified version:

- 1. Full Battery (3 Bars):** Three bars mean the battery is fully charged, indicated by a green light.
- 2. Medium Battery (2 Bars):** Two bars show the battery is half-charged.
- 3. Low Battery (1 Bar):** One bar with a red light warns that the battery is almost empty and needs recharging soon.

## Note on Battery Life:

The breast pump comes with a built-in lithium battery, which is covered under a 6-month warranty. It's important to keep an eye on the battery indicator to ensure your remote control maintains sufficient charge for efficient operation. Regular charging is recommended to maintain optimal performance.



# Getting Started

## Unboxing:

Inside your package, you'll find all components neatly stored. Lay them out and inspect for any visible damage.

## Charging: Before your first use:

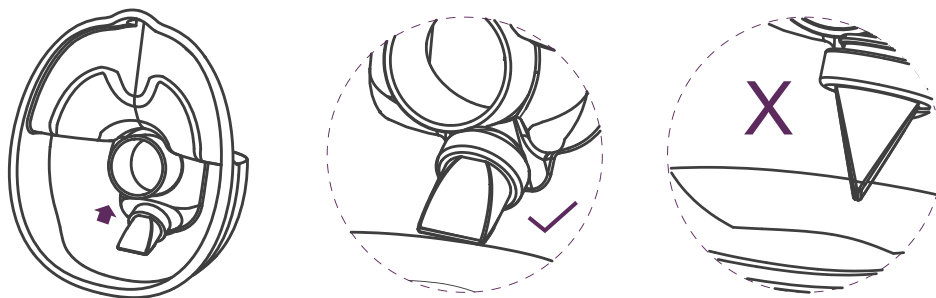
1. Connect the charging cable to the main pump unit.
2. Plug the other end into a wall outlet.
3. The pump unit will display a blinking light indicating it's charging.
4. Charge fully before the first use, roughly 2 hours.

## Initial Cleaning:

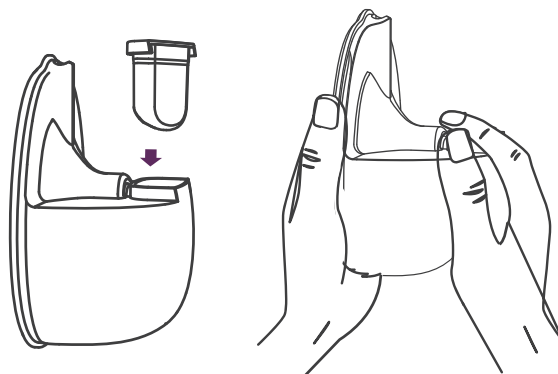
1. Separate the silicone shield and milk collection container attachment from the main pump unit.
2. Wash with warm soapy water.
3. Rinse thoroughly and let them air dry.

# Assembly

1. **Valve Installation:** Attach the valve to the milk collection container, ensuring alignment as illustrated in the accompanying picture.

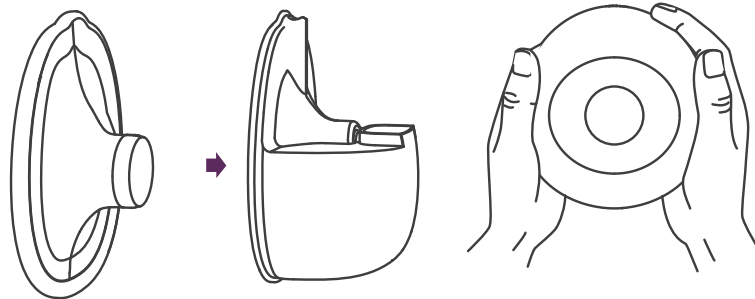


2. **Silicone Diaphragm Placement:** Insert the silicone diaphragm into the milk collection container, securing its edges tightly to maintain a proper seal.

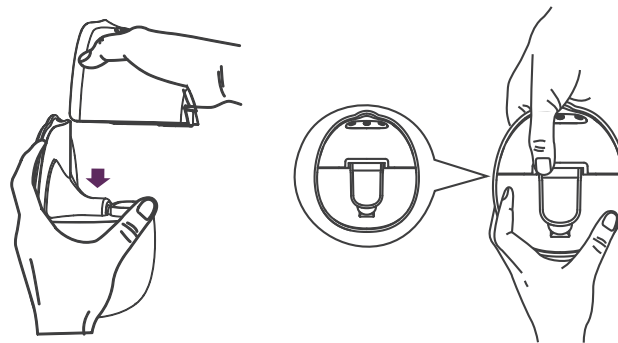


# Assembly

**3. Silicone Shield Attachment:** Align the diversion groove on the shield with the backflow groove on the milk collection container. Firmly press the edges using both hands to ensure the seal is securely in place.



**4. Main Pump Unit Attachment:** Place the main pump unit onto the milk collection container. Align the notch beneath the main body with the silicone diaphragm. Push it downwards, fitting it snugly onto the milk collector to ensure a comprehensive seal.



## Essential Notes for Assembly:

1. **Hygiene First:** Before handling and assembling, thoroughly wash your hands with soap and water. Ensure the pump parts are also cleaned as per the cleaning instructions.
2. **Inspect Components:** Before each use, inspect every component for signs of wear, tear, or damage. Replace any parts that appear compromised to maintain optimal performance.
3. **Dry Assembly:** Ensure all parts are completely dry before assembling. Even small amounts of moisture can interfere with the seal, affecting the pump's suction.
4. **Precise Alignment:** Proper alignment of notches, grooves, and other connectors is crucial. Misaligned components can diminish suction strength and may cause leakage or spillage.
5. **Gentle Yet Firm:** When connecting parts, use gentle yet firm pressure. This ensures a tight fit, but also prevents damaging delicate components like the silicone shield or diaphragm.
6. **Valve & Diaphragm Care:** Regularly inspect the valve and diaphragm. These are vital for creating efficient suction and preventing milk backflow. Ensure they fit snugly and are free from any deformities or residue.
7. **Avoid Force:** Never force components together. If they don't fit smoothly, they might not be aligned correctly or a piece might be damaged. Forced assembly can lead to breaks or reduced functionality.

# Pairing Guide

## Recommendation

It's recommended to pair the remote control with the breast pump prior to regular use.

## NurtureControl Wearable Breast Pump:

1. Steps to turn on the Eynshan NurtureControl breast pump.
2. Press both the '+' and '-' buttons simultaneously on the breast pump until the light flashes, indicating pairing mode. Then release the buttons.

## Remote Control:

1. Turn on the remote control.
2. Choose 'R' for right side or 'L' for left side pumping by pressing the On button on the remote control.
3. After confirming 'R' or 'L', press and hold the On button on the remote control until its display lights up.
4. On the remote control, press both the '+' and '-' buttons simultaneously until the display shows 'P', indicating successful pairing with the breast pump.

## Confirmation of Pairing:

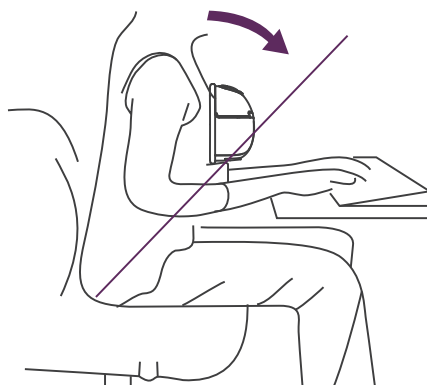
The LED light on the breast pump will cease

## Recommendation

It's recommended to pair the remote control with the breast pump prior to regular use.

# Pumping Position

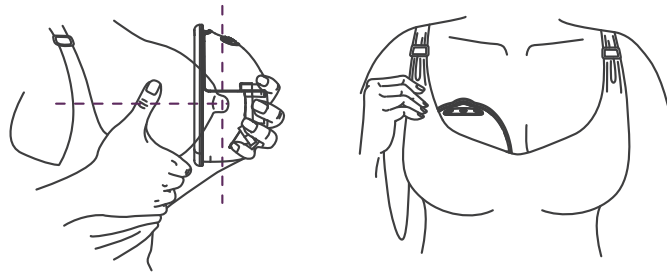
**Wearable Pumping Position:** Sit with back supported. Align the pump with your breast, ensuring the silicone shield forms a seal. Maintain an upright posture for optimal milk flow. Adjust for comfort.



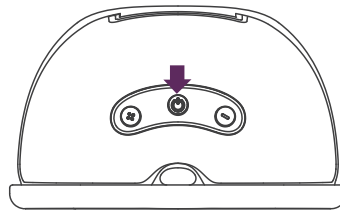


# Nurture Breast Pump User Guide

**Fitting:** Position the silicone shield over your breast, ensuring a comfortable but snug fit.



⌚ **Starting:** Press-on-Hold the Power button; the device will start in massage mode to stimulate flow.

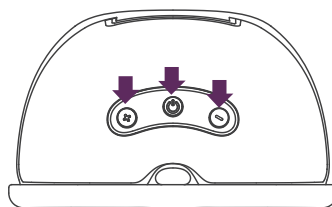


**Mode Settings:** Adjust the mode to your preference using the Power button

+ **Level Up Button:** Press to raise intensity. Each tap will increase the setting for more comfort.

= **Level Down Button:** Press to lower intensity. Each tap will decrease the setting for a softer experience.

**Note:** The motor unit is equipped with a light indicator instead of an LED display. When you reach the maximum or minimum intensity level, the light will flash three times to alert you.



⌚ **Switch Off Button:** Press and hold to turn off the pump. Ensure device stops completely.

1. **Duration:** Each session of the pump has an automatic shut-off after 20 minutes for safety.
2. **Memory Function:** Automatically recalls your last setting for seamless pumping experience.

# Remote Control Operation Manual

**1. Entering Sleep Mode:** If the remote control remains inactive for 1 minute (i.e., no buttons are pressed), the LED screen will automatically enter sleep mode to conserve energy.

**2. Waking from Sleep Mode:** To wake the remote control from sleep mode, press the power button. This action will cause the LED light on the remote control to illuminate, indicating that the device is active again.

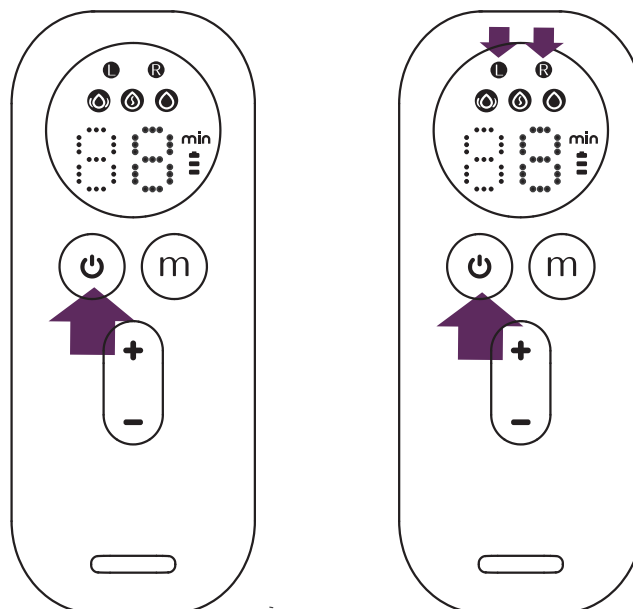
**3. Display Activation:** After the LED light is on, press the power button a second time. The display will then show "R" and "L" alternately. This feature helps you easily identify and control the functions for the right ("R") and left ("L") breast pumps.

**Note:** The sleep mode feature is designed to enhance battery life and ensure energy efficiency. Make sure to follow these steps to properly manage the remote control's power usage.

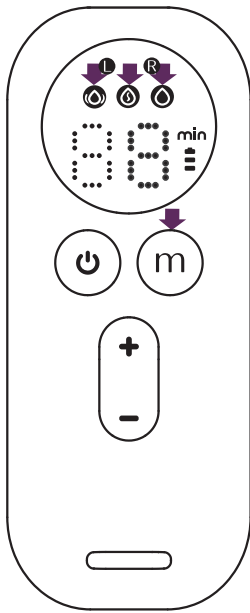
## Activating and Deactivating Breast Pump Sides with Remote Control

**1. Operating the Left-Side Breast Pump:** When the LED screen on the remote control displays "L", indicating the left side, you can turn the left-side breast pump on or off by hold-and-pressing the power button.

**2. Operating the Right-Side Breast Pump:** Similarly, when the LED screen shows "R" for the right side, you can control the right-side breast pump. To turn it on or off, simply hold-and-press the power button.

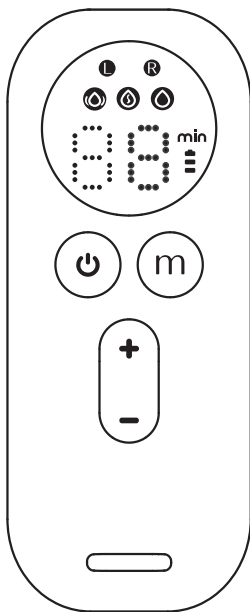


# Remote Control Operation Manual



**1. Switching Modes:** Press the mode button to cycle through the three available modes:

- **Massage Mode:** Mimics initial quick suckling to initiate milk flow.
- **Stimulation Mode:** A blend of massage and expression with adjustable strength for efficient milk expression.
- **Expression Mode:** Emulates deep suckling; ideal for sustained milk flow with nine adjustable settings.



**2. Adjusting Suction Levels:** Each mode comes with 9 levels of suction intensity.

- To increase the suction level, press the "+" button.
- To decrease the suction level, press the "-" button.
- Select the level of suction that feels most comfortable and effective for your needs.

## Note:

- Each mode is designed to cater to different stages of milk expression and comfort.
- It's important to start at a lower level and gradually increase to find the most comfortable and efficient setting for you.
- Remember to switch modes according to your need for milk expression or comfort.

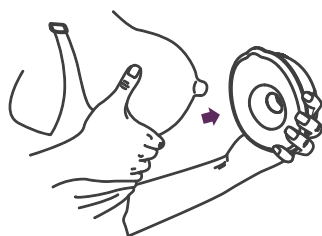
## Caution:

- Avoid rapidly increasing the suction level to the maximum, as it may cause discomfort. Gradual adjustment is recommended.
- Make sure to use the appropriate mode that best suits the stage of your milk expression.

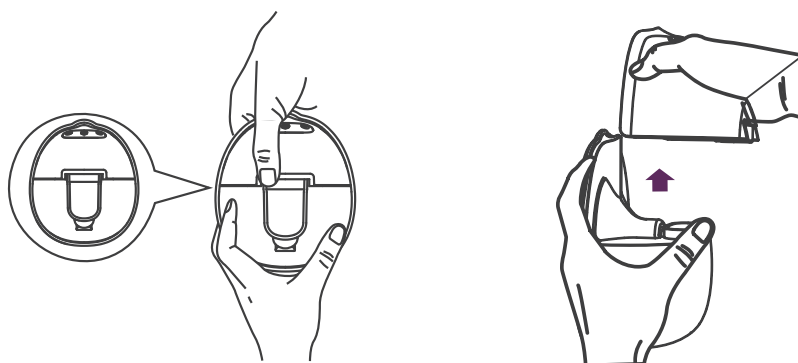
# Post-Pumping Steps

After completing your pumping session, gently detach the Eynshan NurtureControl from your breast. Ensure the NurtureControl remains upright. Remove the main pump unit, then carefully pour the breast milk from the milk collection container into a storage bottle or bag, ensuring the container's spout aligns with the storage vessel to prevent any spillage.

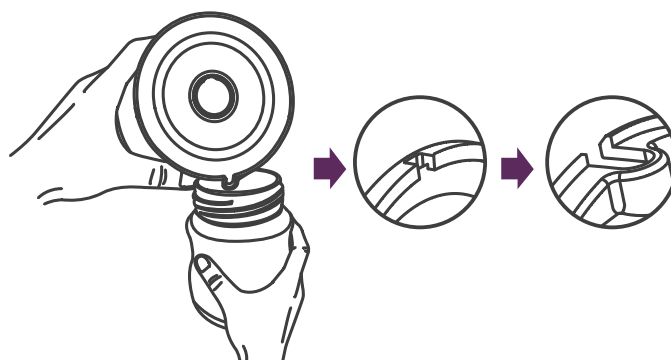
1. **Turning Off:** Once done pumping, press and hold the power switch to shut off. Carefully break the seal between the silicone shield and your breast with your finger, and then gently detach the pump



2. **Storing & Cleaning:** Separate the milk collection container from the main unit and store appropriately. Remember to clean all the used components following the provided cleaning instructions.



3. **Transferring Milk:** Pour your breast milk into the designated storage bottle or bag, ensuring alignment with the slot feature for a spill-free trans-



# Cleaning & Maintenance

Proper care and maintenance of your Eynshan NurtureControl wearable breast pump is crucial for its longevity and performance. Here's a guide:

## Daily Cleaning:

1. **Disassemble:** Carefully separate all parts of the Eynshan NurtureControl for cleaning.
2. **Initial Rinse:** After use, rinse each component under cool water to remove milk particles.
3. **Deep Soak:** Soak the parts in warm, soapy water for a few minutes.
4. **Gentle Scrub:** Use a soft brush or cloth to scrub each part, reaching all areas.
5. **Final Rinse:** Rinse thoroughly under warm water to eliminate soap residues.
6. **Air Drying:** Place parts on a lint-free towel or drying rack in a ventilated area, avoiding sunlight.

## Deep Cleaning:

1. **Prepare for Boiling:** Clean the pot and fill it with enough water to submerge the pump parts.
2. **Boil for Sterilization:** Boil the components for 5 minutes to sterilize.
3. **Careful Removal:** Remove parts with sterilized tongs or a clean utensil.
4. **Cooling:** Place the parts on a sterilized tray or cloth to cool.
5. **Thorough Drying:** Dry completely on a lint-free cloth or drying rack before reassembly or storage.

## Maintenance and Replacement:

1. **Routine Checks:** Inspect the silicone shield, valves, and parts monthly for wear or damage.
2. **Replace if Needed:** Replace any warped, cracked, or damaged parts promptly.
3. **Store Safely:** Keep the pump and parts in a cool, dry place, away from sunlight or extreme temperatures.

Following these steps ensures your Eynshan NurtureControl wearable breast pump remains in excellent condition for a reliable and hygienic pumping experience.



# Troubleshooting

Experiencing issues with your breast pump? Here's a guide to help you identify and resolve common problems:

## 1. Pump Doesn't Turn On:

- Charge the battery.
- Check the charging cable's functionality.
- Press the power button firmly.

## 2. Weak Suction or No Suction:

- Inspect the silicone shield for damage or cracks.
- Ensure correct assembly and secure fit of all parts.
- Check valves for blockages from debris or milk residue.
- Verify the silicone diaphragm's secure placement on the milk container.

## 3. Pump Stops Mid-Session:

- Recharge if the battery is low.
- Check for accidental button presses.

## 4. Noise While Pumping:

- Confirm correct assembly of components.
- Check for wear in the silicone shield or diaphragm.

## 5. Battery Not Charging:

- Try a different charging cable or power source.
- Clean the charging port to remove debris.

## 6. Remote Control LED Display Issues:

- Restart the remote control.
- If persistent, it may be a hardware issue; contact Eynshan customer service.

## 7. Milk Leaking from Pump:

- Avoid overfilling the milk container.
- Ensure proper alignment and sealing, particularly of the silicone shield and container.

## 8. Unusual Vibrations:

- Turn off and restart the pump.
- Check for visible damage or misalignment.

## 9. Pump Feels Uncomfortable:

- Adjust mode and level settings.
- Confirm the silicone shield size is suitable.
- Reposition the pump for a better fit.

**Note:** If issues persist, or if there's physical damage, stop using the pump and contact Eynshan customer support. Regular maintenance and cleaning can prevent many issues.



Thank you for choosing Eynshan!

Your trust in our product means a lot to us. We've put in a lot of effort to ensure that the Eynshan wearable breast pump is of premium quality, designed to support and enhance your breastfeeding experience. If you have any questions or need assistance, remember that our dedicated team is always here to help.

If you need assistance or have any feedback about the Eynshan wearable breast pump, don't hesitate to reach out. Our EynCare customer service team is dedicated to supporting your breastfeeding journey.

For immediate assistance:

Scan the QR Code to Chat with Our EynCare Customer Service



Alternatively, you can:

Email us at: [support@eynshan.com](mailto:support@eynshan.com)

Visit our website: [www.eynshan.com](http://www.eynshan.com)

#### Warranty Information

Every Eynshan NurtureControl Wearable Breast Pump comes with a 2-year International warranty. For full details and terms, visit our website [www.eynshan.com](http://www.eynshan.com).

#### Copyright Notice:

All content within this manual, including but not limited to text, diagrams, images, and logos, are the exclusive property of Eynshan. They are protected by copyright laws and international copyright treaties, as well as other intellectual property laws and treaties. Unauthorized reproduction, distribution, or transmission of this material, whether in part or in entirety, without the prior written consent of Eynshan, is strictly prohibited.

#### Trademark Notice:

"Eynshan", "Eynshan NurtureControl", and all associated logos, icons, and graphics are registered trademarks or trademarks of Eynshan in various jurisdictions. Unauthorized use of these trademarks without the prior written consent of Eynshan is strictly prohibited. All other product names, logos, brands, and trademarks mentioned herein are the property of their respective owners and are used solely for identification purposes.

#### Legal Actions:

Eynshan reserves the right to take legal actions against any unauthorized use of its intellectual properties. This includes, but is not limited to, actions against counterfeiting, trademark infringement, and unauthorized distribution of Eynshan products or manuals.

#### Permission Requests:

For permissions related to copyright or trademark use, or if you wish to reproduce any part of this manual, please contact Eynshan's legal department at [legal@eynshan.com](mailto:legal@eynshan.com)

#### Disclaimer:

While every effort has been made to ensure that the information contained in this manual is accurate and complete, Eynshan assumes no responsibility for errors or omissions, or for damages resulting from the use of the information contained herein.